

## Lower Swatara Township

Fall 2016

# LST UPDATE

## PRESIDENT'S MESSAGE

Dear Residents,

As the summer turns to fall, we on the Board of Commissioners are looking forward to the cooler weather, the Holiday Season, and the conclusion of another successful year at the Township.

We've accomplished much so far this year. As our children return to school, we would be remiss if we didn't recognize the efforts of our colleagues at the school district and many others who have brought the new Middletown Area High School construction project to completion. While they have been busy, we at the Township have been working diligently to secure the funding and making the appropriate plans that will allow us to address the structurally deficient bridges throughout our community.

We aren't just touting past projects though. We continue to look to the future. As a result of our success in obtaining grant funding from DCNR, you will see improvements to both the Old Reliance and the Shoppes Garden parks in the near future.

In an effort to ensure compliance with increasing storm-water regulations, we have been vigilant in identifying projects that will be necessary for the Township to maintain its permits with the EPA. As a result of the work that's already been done and more that's yet to come, you will likely be seeing numerous improvements to our Township's infrastructure in the near future to ensure we are responsibly managing our stormwater runoff.

This fall, Sgt. Scott Young, one of our police officers, will be providing training for interested Township residents on surviving when an active shooter is in a building. These sessions will be made available at the Lower Swatara Fire Station, 1350 Fulling Mill Road, Middletown, PA 17057. Residents can sign up at [Police-info@lowerswatara.org](mailto:Police-info@lowerswatara.org).

On a personal note, it's possible this will be my last President's Message. As many of you know, I am running to replace State Representative John Payne who is retiring after many years of honorable service to our Township and the 106 District. If elected in the general election, I'm truly looking forward to the opportunity to continue serving Lower Swatara Township in this new role.

In conclusion, I hope everyone has a happy and safe autumn. As always, don't hesitate to contact the board or staff with questions or comments.

Sincerely,

**Tom Mehaffie**, President



State Rep. John Payne Invites  
Veterans and Active Duty Military Personnel  
of the 106th District to His

## 2016 VETERANS BREAKFAST

**Friday, Nov. 4, 2016 from 8-10 a.m.**  
**Spring Garden Reception & Conference Center**  
903 Spring Garden Drive, Middletown  
(in Lower Swatara Township)



Seating for this event is limited and reservations are required.  
Contact Rep. Payne's office today at 534-1323 to reserve your seat!

**REGISTRATION DEADLINE IS MONDAY, OCT. 24, 2016**

State-related veterans information will be distributed at this event.  
Worn, torn or defaced flags will be accepted at the event for proper retirement.

## LOWER SWATARA TOWNSHIP

1499 Spring Garden Drive  
Middletown, PA 17057  
Phone: (717) 939-9377 • Fax: (717) 939-5682

**Administrative Office Hours:**  
8:00 A.M. to 4:00 P.M.

**Website:** [www.lowerswatara.org](http://www.lowerswatara.org)

**"Like" us on Facebook —  
Lower Swatara Township**

## STORMWATER MANAGEMENT

### KEEPING THE SWATARA AND SUSQUEHANNA CLEAN

Lower Swatara Township is obligated to enforce regulations set by the EPA and PA DEP for all Stormwater Management Facilities that discharge water within the township, known as the Municipal Separate Storm Sewer System or better known as (MS4). Polluted stormwater runoff causes harmful effects to our drinking water supplies, recreation activities, fish and wildlife areas and the local economy. Here are some things that you can do to prevent stormwater runoff pollution and help keep our water clean:

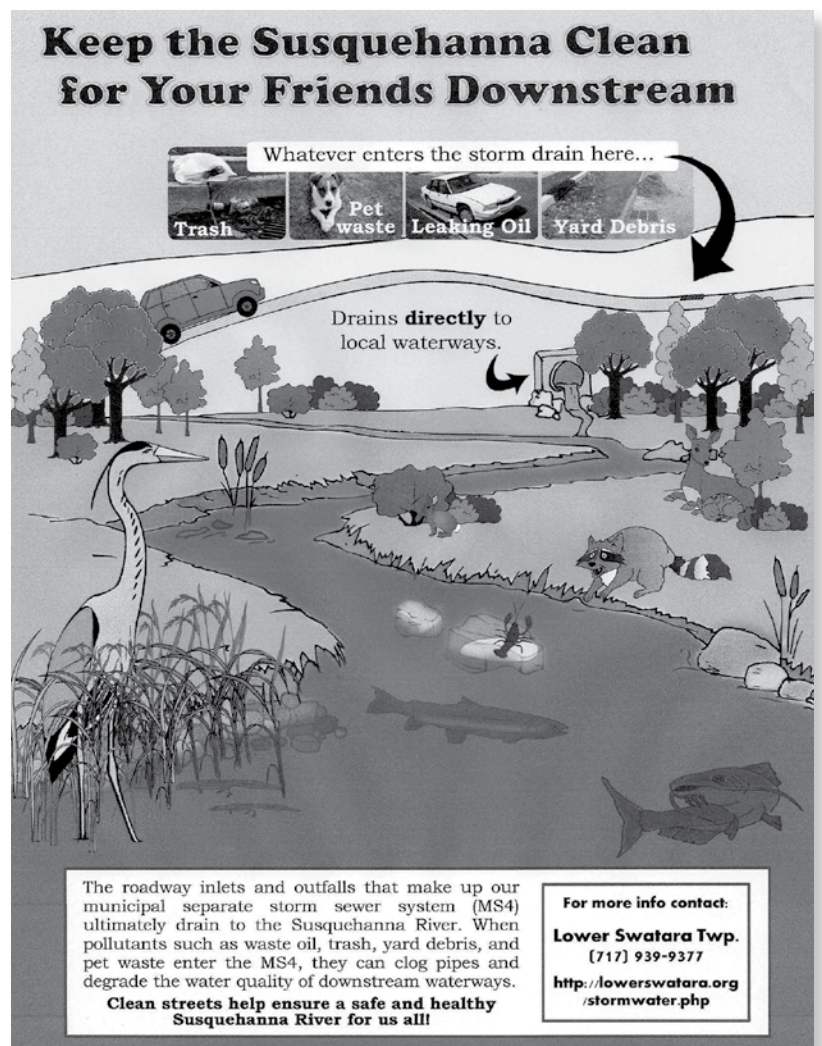
- ♦ Use lawn care products such as fertilizer, herbicides and pesticides sparingly and carefully follow label directions for application.
- ♦ Vegetate bare spots in your yard and compost your lawn waste.
- ♦ Properly dispose of all pet waste.
- ♦ Never dump anything down a storm drain or in streams.
- ♦ Direct downspouts and sump pump discharge away from paved surfaces to vegetated areas.
- ♦ Use a public car wash that recycles its water when possible or wash vehicles on a vegetated area of private property, not on the driveway.
- ♦ Maintain your vehicle to prevent oil, grease and antifreeze leaks.
- ♦ Drain swimming pool water onto the lawn area, not into the street storm drain or sanitary sewer.
- ♦ Maintain the septic system in proper working order, have the septic tank pumped and serviced every 3 – 5 years.

Every home owner can play an active role to help manage their property and put into practice efforts to control and eliminate pollutants into the stormwater system. Remember that roadway inlets and constructed stormwater collection systems found in many residential developments are designed to collect, control, convey and discharge stormwater into a drainage system. This makes up our Municipal Separate Storm Sewer System (MS4) that ultimately discharges into either the Swatara Creek or the Susquehanna River. When pollutants such as waste oil, trash, pet waste,

yard debris and soil erosion enters the MS4 system, they can clog pipes and degrade the local stormwater system which are considered illicit discharges and are violations of the law. So remember that clean property and streets along with proper disposal of these materials help ensure safe and healthy waterways in our communities.

For more information on this or to answer your questions please visit our website at [www.lowerawatara.org](http://www.lowerawatara.org) or contact the Codes, Zoning and Planning Department at 939-9377, the Dauphin County Conservation District at 717-921-8100 or the Pennsylvania Department of Environmental Protection Regional Office at 717-705-4700.

— Prepared by Robert Greene, LST MS4 Coordinator





## MS4 CORNER

The Township's National Pollutant Discharge Elimination System (NPDES)-regulated Municipal Separate Storm Sewer System (MS4) collects stormwater runoff, conveys the water through a system of pipes and swales, and then discharges it to surface waters. As a Township resident there are simple steps you can take to protect the local watershed by preventing pollutants from entering the MS4.

### PROTECTING OUR WATERSHED: STORMWATER FRIENDLY LANDSCAPING

Summer thunderstorms can make a mess of your yard and as well as local waterways. The following tips will help keep your lawn looking its best while also protecting the water quality of our streams and rivers.



#### Keep yard debris out of stormwater inlets and streams.

Compost your grass clippings and leaves or dispose of yard debris during the Township's curbside pick-up days. Yard waste that washes into stormwater inlets gets discharged into local streams where it contributes to algal growth, making the water green and smelly, and decreases the oxygen needed for aquatic life.

#### Landscape with deep-rooted native plants or trees.

The roots of turf grass extend only two to three inches into the soil, giving it little ability to hang on during high velocity water flows. The root systems of native flowers and grasses are much deeper and act as anchors that keep the plants and surrounding soil from washing away. Native plants also increase the amount of water the soil can absorb, meaning that more water sinks in to recharge groundwater aquifers and less ends up in the storm drain.

#### Maintain a healthy un-mowed buffer along streams and wetlands.

If you live along a stream or wetland, an un-mowed stream bank buffer vegetated with native plants and trees will hold the soil in place when it rains. Buffers also catch and filter many of the pollutants that can be found in melting snow and stormwater runoff.

#### Keep flood-prone areas of your yard free from debris and obstructions.

Rain storms can create standing water and temporary streams that wash loose dirt and debris out of your yard. Debris carried by stormwater washes into the storm sewer system where it can clog pipes, cause flooding, or be carried downstream into local waterways.

### PROTECTING OUR WATERSHED: PET WASTE DISPOSAL

Pet waste is more than smelly and unsightly – it is a health risk to pets and people, and our local waterways.

When it rains, pet waste left on sidewalks and grassy areas can be washed into the stormwater inlets that discharge to local streams and rivers. The bacteria, parasites and viruses in pet waste degrade water quality and can cause people who unknowingly swim or fish in a contaminated waterway to become sick. Additionally, the nutrients in pet waste cause harmful algae and aquatic weeds to grow. Not only does the excess algae growth make the water green and unsightly, it also decreases the oxygen needed for aquatic life.



#### Do your part to keep our waterways clean and healthy.

- ◆ **Always** carry a plastic bag while walking your dog.
- ◆ Dispose of pet waste bags **in the trash**.
- ◆ **Never** dispose of pet waste in a storm drain as they drain directly to our streams and rivers.



Would you like to receive timely information regarding happenings in the Township? Please email us at [info@lowerswatara.org](mailto:info@lowerswatara.org) and ask to be added to our email list.

## RECREATION

### OLMSTED RECREATION BASKETBALL PROGRAM

Dear Basketball Player & Parents:

On Page 5 of this newsletter is a registration form for the 2016– 2017 season of the Olmsted Recreation Basketball program. If you are interested in playing this season, please complete the enclosed application and return it to the Olmsted Recreation Office no later than 3:00 pm SEPTEMBER 20, 2016.

You may register in two ways:

1. Complete the form and mail it with your check to: Olmsted Recreation, 55 W. Water St., Middletown, PA 17057
2. Complete the form and bring it with your check or cash to one of the two registration dates that are being held:

**MON., SEPT. 12th or MON., SEPT. 19th**  
**OLMSTED RECREATION OFFICE**  
**(LOWER LEVEL OF THE MAIN ST. GYM)**  
**6:00 – 7:30 p.m.**

**Registration costs are: \$60.00 per player/\$80.00 for two players/\$100.00 for three or more players**  
DISCOUNT RATES ONLY APPLY TO PLAYERS FROM THE SAME FAMILY.

*We will be doing a mandatory sub/sandwich fundraiser.*

*If you chose not to participate in this fundraiser the buy-out will be \$40.00.*

**PLEASE MAKE CHECKS PAYABLE TO: OLMSTED RECREATION**

AGES: BOYS & GIRLS AGES 8 (BORN IN 2008) THROUGH 13 (BORN IN 2003).

If you are in 7th or 8th grade you can still register . If you are planning to try out for the Junior High team and make it you will be reimbursed your registration if you are not going to play with our recreation team. If for some reason you do not make the team, we will place you on a recreation team.

*If any parents are interested in coaching, please indicate that by completing the section on the registration form for coaches. Our policy is to take returning coaches first, but we always need new coaches. Even if you can help on a part time basis, your assistance is appreciated.*

***If you have any questions, please call the Rec. Office at 948-3318.***

### Lower Swatara Township Athletic Association (LSTAA)

**Jason Wagner, President**

**PO Box 174**

**Highspire, PA 17034**

**Email: [president@lstaa.org](mailto:president@lstaa.org)**

**Website: [www.lstaa.org](http://www.lstaa.org)**



The Lower Swatara Township Athletic Association (LSTAA), incorporated in 1967, has been providing youth baseball and softball within the community for almost 50 years. LSTAA's mission is to provide a safe, enjoyable and competitive baseball and softball program that firmly instills in the participants the ideals of good sportsmanship, honesty, loyalty, courage, and reverence. LSTAA's mission will be achieved by providing supervised, competitive activity with the understanding that the attainment of skill and winning is important within the limits of good sportsmanship.

LSTAA's goal is not only help each participant realize their full athletic potential, but to assist in the development of their character. We want every child to become better baseball and softball players while they are participating, but after their playing days are done, we want to see them become responsible members of our community.

## RECREATION

### OLMSTED RECREATION REGISTRATION FORM

NAME: \_\_\_\_\_ PHONE: \_\_\_\_\_

ADDRESS: \_\_\_\_\_

CURRENT GRADE \_\_\_\_\_ BIRTH DATE: \_\_\_\_\_

PARENT/GUARDIAN NAME: \_\_\_\_\_ PHONE: \_\_\_\_\_

EMAIL \_\_\_\_\_

2ND CONTACT NAME \_\_\_\_\_ PHONE: \_\_\_\_\_

EMAIL \_\_\_\_\_

FAMILY DOCTOR: \_\_\_\_\_ PHONE: \_\_\_\_\_

INSURANCE CO./POLICY #: \_\_\_\_\_

PERSON TO BE CONTACTED IF PARENT/GUARDIAN CANNOT BE REACHED:

LIST SPECIAL MEDICAL/DIETARY INFORMATION NECESSARY FOR MANAGEMENT IN AN EMERGENCY SITUATION: \_\_\_\_\_

PARENT/GUARDIAN SIGNATURE: \_\_\_\_\_

COMMENT SECTION: \_\_\_\_\_

IF YOU ARE INTERESTED IN BEING A COACH PLEASE COMPLETE THE INFORMATION BELOW.

NAME: \_\_\_\_\_ PHONE: \_\_\_\_\_

EMAIL: \_\_\_\_\_

#### Office Only

Payment Information:

Cash \_\_\_\_\_ Check# \_\_\_\_\_ Date \_\_\_\_\_

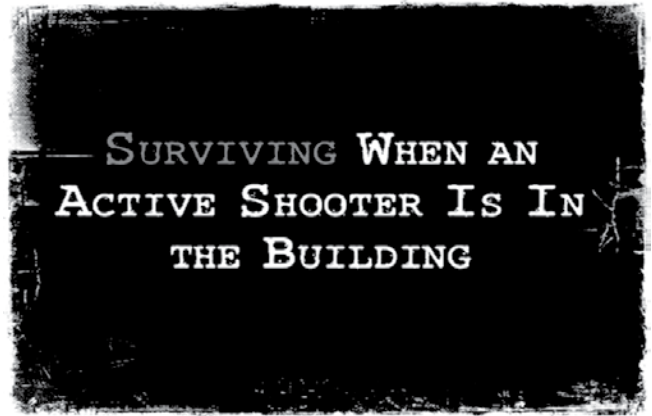
Amount \_\_\_\_\_ Amount \_\_\_\_\_

## ACTIVE SHOOTER TRAINING OFFERED

The Lower Swatara Township Police Department has been offering an educational presentation to businesses within the Township for important information on how to respond during an active intruder or active shooter event. This is not only for your work life or work place, but for your personal lives as well. We all are aware by now that these types of events can occur in many different locations such as movie theaters, restaurants, churches and businesses.

We are offering this information through presentations and question and answer sessions. It will be presented by Sgt. Scott A. Young of the Lower Swatara Township Police Department. Sgt. Young is a 26 year veteran of Law Enforcement. He is also a training officer and an adjunct Police Academy Instructor through Harrisburg Area Community College. He's currently an Assistant Team Commander with Dauphin County's Crisis Response Team and an Entry Team Leader. He has taught Active Shooter Response to officers for over ten years and has worked with the Middletown School District and Penn State University on this type of training and information. He is also a certified A.L.I.C.E. Instructor for response to active shooter options, planning and training.

"I feel this is such an important issue in these changing times, not only in the nation but the world. It is something people should be talking about with their families and discussing with each other. There are many questions folks have and many options that they have available to them, that maybe they had not thought of or didn't consider. Citizen preparation is important. I have some answers, I have some thoughts and I have some options to provide. Simple things, really, and I have used these tips throughout my career and with my own family. No one should be a victim of any crime and if we have some information that can save a life or buy you some time until help arrives, it is our responsibility and obligation to get that out there to you and those you love." — *Scott Young*



### **DATES, TIMES AND LOCATIONS FOR THE ACTIVE SHOOTER RESPONSE EDUCATIONAL PRESENTATION ARE AS FOLLOWS:**

- Why:** To make you think, and better prepare you for what may happen
- Who:** Lower Swatara Township Residents
- Where:** Lower Swatara Township Fire Station, 1350 Fulling Mill Road, Middletown, PA 17057
- When:** Tuesday September 13, 2016 from 6:30 pm to 8:30 pm  
Tuesday September 20, 2016 from 6:30 pm to 8:30 pm  
Thursday October 6, 2016 from 6:30 pm to 8:30 pm  
Monday October 24, 2016 from 6:30 pm to 8:30 pm  
Thursday November 17, 2016 from 6:30 pm to 8:30 pm

We ask that you RSVP through the below email with how many will be coming from your family or group and please list the date you will be attending. Thank you. I'm excited to meet you and talk with you. — *Scott*

**[Police-info@lowerswatara.org](mailto:Police-info@lowerswatara.org)**

## MUNICIPAL AUTHORITY

### MS4

Municipal Separate Storm Sewer System, or MS4 work is a constant battle against storm water runoff. To combat this beast; we sweep streets, clean catch basins, inlets and lines to ensure that they are ready to convey water during storms. This also helps keep contaminants and debris out of the streams, creeks and rivers, helping to keep the Chesapeake Bay and all of its tributaries healthy.

### SWIMMING POOL DRAINAGE

Do you have a pool to drain in preparation for the fall season? If so, make sure the water is dechlorinated by allowing it to sit for 2 weeks without adding chlorine. Discharge the water into an area that does not flow into a stream or storm sewer. Discharging pool water to any waters of the Commonwealth without a permit is a violation of the Clean Streams Law.

### SANITARY SEWER

Inflow and Infiltration (I&I) is water, other than sanitary wastewater, entering into the sanitary sewer system. Inflow includes water entering through roof drains, sump pumps and leaks through manhole covers. Infiltration is when water from the ground enters the sanitary sewer system through defective pipes, open joints, connections, etc. I&I can cause Sanitary Sewer Overflows (SSO's), surcharging of pipes and excessive treatment of clean water at wastewater treatment plants. This excessive clean water can be detrimental to the biological processes employed at today's treatment facilities. Every gallon of water that enters a wastewater treatment plant, whether it is clean water from a rain event or sanitary wastewater, is handled in the same manner and costs the same to process. The less I&I we allow into the pipe, the less we have to process, the less it costs everyone at the end of the day.

### ACT 537

Act 537 or the Pennsylvania Sewerage Facilities, provides planning and regulation of community and individual sewerage systems. The township has taken the initial steps to update its Act 537 plan which was last updated in 1983. Part of this update includes gathering Geographical Information System (GIS) data on all pipes 10" or larger, televising of all pipes 12" or larger and a new acoustic surveying technology to analyze the condition of pipes in hard to access areas. This information will be used to create flow models for the current infrastructure and planning for upgrades and repairs needed in the future. To date, more than 80,000 feet of pipe and hundreds of manholes have been surveyed or televised. The Township's system includes over 270,000 feet of gravity and force main pipe.

## PUBLIC WORKS DEPT.

### NO GRASS CLIPPINGS IN THE STREET!

Both the Police Department and Public Works Department receive complaints every spring/summer season regarding grass clippings in the street. Placing grass clippings in the street is a violation of Township ordinance, since it will result in clogged sewer drains, storm pipes, a constant maintenance issue for the Public Works Department and also a violation with the EPA/DEP mandates. The Police Department, upon receiving a complaint or observing this violation, can cite the homeowner/business for this violation. The Township is requiring all property owners to dispose of their grass clippings in an approved manner after cutting grass. Which includes placing the clippings in the regular trash, or redistributing in their yard. Your cooperation will be greatly appreciated.



### PARK IMPROVEMENTS SLATED

The Public Works Department will be looking to make some park improvements to both Shopes Gardens Park and Old Reliance Park in the fall of 2016. We are excited to make upgrades that will create a safe and fun place for the kids to play for years to come.

### FUTURE PAVING PROJECTS

Late summer or early fall we anticipate having three of our streets in the Township milled and repaved! The planning and preparation that goes into paving roads is quite extensive. At least one year prior, if not sooner, all underground infrastructure must be flushed, inspected, televised and reviewed. Any issues discovered during this inspection must then be budgeted for repair. Repairs then need to be completed before the paving can begin. We are working on creating a Capital Improvement Plan that encompasses all Township owned infrastructure, road surface conditions, etc. This plan will give us a replacement plan that we can follow and budget for in an efficient and cost effective manner.



## FIRE DEPARTMENT

### MEMBER RECRUITMENT

The Lower Swatara Volunteer Fire Department is just that, 100% volunteer. We are seeking new members that may or may not have an interest in firefighting. We have many positions available that have nothing to do with actually fighting fires or responding to emergencies. We are looking for new people (our neighbors) who are looking to help their community, meet new people, as well as save the Township taxpayers millions of dollars in taxes. The more non-firefighting members we have, the more time firefighters have to handle the calls. We are looking for people with ideas, organizational, maintenance, financial and repair skills, and anything else you can think of. By joining the company you will meet new people and gain friendships that will last a lifetime, as well as achieve the satisfaction that you are helping others and your community.

If you do have an interest in the firefighting side of the company, we offer all the training you will need at no charge to you. All equipment is provided. You will not be asked to do things that you are not comfortable doing. On

a fire there are many jobs that do not require entering the building or coming face to face with an accident victim. You only do what you are trained for and are comfortable doing. There are many things that you may not be aware that the Lower Swatara Volunteer Fire Company does. Are you a boater or good swimmer? We have a rescue boat and help boaters on the Susquehanna River who may need assistance.. Good at making sandwiches? Did you know that your fire company is a Mobilization Center for USDA Forestry Service? We house and feed firefighters that go out west to fight forest fires. We get to meet and interact with them when they are deployed and when they return. Want to help with Bingo? Bingo is called every Wednesday. These are just a few things we do.

If you have questions or interest in a tour of the station, please contact the Fire Chief's Office at 717-986-9059, ext. 104. If no answer, leave us a message. We will return your call as soon as we can. We look forward to seeing you at the station!



### **Lower Swatara Fire Department** **Thursdays 6 PM to 7 PM – Ongoing from July 7th** **Angie Hilf, Instructor**

This is not your usual Zumba class. This is an hour long evening packed full of movin' and groovin' with participants of all ages! Whether you are new to Zumba or experienced, Instructor Angie Hilf will motivate you to exercise because you enjoy it and are having a great time! There is no set fee. All weekly donations will be given to the Fire Department. Contact Angie Hilf with any questions.



**(717) 608-0861**



## GENERAL INFORMATION

### Meetings:

The following Boards and Commissions meet regularly at the Lower Swatara Township Municipal Building. Meeting dates/times are indicated below. All meetings are open to the public and we encourage you to attend.

**Lower Swatara Township Board of Commissioners:**

Workshop Meeting – 1st Wednesday of the month, 7:00 P.M.  
Legislative Meeting – 3rd Wednesday of the month, 7:00 P.M.

**Lower Swatara Township Planning Commission:**

4th Thursday of the month, 7:00 P.M.

**Lower Swatara Township Municipal Authority:**

4th Monday of the month, 7:00 P.M.

**Zoning Hearing Board:**

As requested

Meetings may be rescheduled due to holidays or special needs.  
Please check our website ([www.lowerawatara.org](http://www.lowerawatara.org)) for meeting information.

### TAX COLLECTION REMINDERS

Real estate taxes can now be paid online. Call the Dauphin County Treasurer's Office for more information at (717) 780-6550 or visit [officialpayments.com](http://officialpayments.com).

Per Capita and Occupational tax bills were mailed July 1st.

If you have questions about your bill or would like to make a payment, you may contact Berkheimer Tax Collections at (610) 599-3141 or [hab-inc.com](http://hab-inc.com).

### Staff:

**MANAGER'S OFFICE:**

Anne Shambaugh, Manager  
Frank Williamson, Assistant Manager  
Jean R. Arroyo, Township Secretary

[ashambaugh@lowerawatara.org](mailto:ashambaugh@lowerawatara.org)  
[fwilliamson@lowerawatara.org](mailto:fwilliamson@lowerawatara.org)  
[jarroyo@lowerawatara.org](mailto:jarroyo@lowerawatara.org)

**CODES/PLANNING AND ZONING DEPARTMENT:**

Donald A. Fure, Building Code Inspector  
Jact Dela Cruz, Code Enforcement Officer  
Robert S. Greene, Jr., Planning and Zoning Coordinator  
Tonya K. Condran, Administrative Assistant

[dfure@lowerawatara.org](mailto:dfure@lowerawatara.org)  
[jdelacruz@lowerawatara.org](mailto:jdelacruz@lowerawatara.org)  
[rgreene@lowerawatara.org](mailto:rgreene@lowerawatara.org)  
[tcondran@lowerawatara.org](mailto:tcondran@lowerawatara.org)

**FINANCE DEPARTMENT:**

Lisa M. Mundis, Finance Director  
Rebecca L. McClain, Accountant

[lmundis@lowerawatara.org](mailto:lmundis@lowerawatara.org)  
[rmcclain@lowerawatara.org](mailto:rmcclain@lowerawatara.org)

**MUNICIPAL AUTHORITY:**

Lester Lanman, Manager  
Tracey L. Bechtel, Administrative Assistant

[llanman@lowerawatara.org](mailto:llanman@lowerawatara.org)  
[tbechtel@lowerawatara.org](mailto:tbechtel@lowerawatara.org)

**POLICE DEPARTMENT:**

Frank Williamson, Public Safety Director  
Kendra Riley, Administrative Assistant

[fwilliamson@lowerawatara.org](mailto:fwilliamson@lowerawatara.org)  
[kriley@lowerawatara.org](mailto:kriley@lowerawatara.org)

**PUBLIC WORKS:**

Daniel L. Wagner, Superintendent  
Lester Lanman, Assistant Superintendent

[dwagner@lowerawatara.org](mailto:dwagner@lowerawatara.org)  
[llanman@lowerawatara.org](mailto:llanman@lowerawatara.org)

## SCHOOL BUS SAFETY INFORMATION



### PENNSYLVANIA'S SCHOOL BUS STOPPING LAW Keeping Children Safe

- ★ When you meet or overtake a stopped school bus with red signal lights flashing and stop arm extended, you **MUST STOP**.
- ★ When you approach an intersection where a school bus is stopped with red signal lights flashing and stop arm extended, you **MUST STOP**.
- ★ You **MUST STOP** at least ten (10) feet away from the school bus.
- ★ You **MUST WAIT** until the red lights have stopped flashing and the stop arm has been withdrawn before moving.
- ★ **DO NOT MOVE** until all the children have reached a place of safety.

## TRANSPORTATION DEPARTMENT BUS SAFETY INFORMATION

### *Parent and Student Tips*

- ★ Get to the school bus stop five minutes early, so you won't have to run across the road to catch the bus.
- ★ When waiting for the bus, stay away from traffic. Line up at least five steps away from the curb or the roadway to wait for the bus.
- ★ Never run after the school bus if it has already left the bus stop.
- ★ Never push when getting on or off of the school bus.
- ★ Always walk at least 10 feet in front of the bus when crossing so that the school bus driver can see you.
- ★ Be aware — Cross with Care! Wait until the school bus has stopped all traffic before stepping out onto the road.
- ★ When the school bus is moving, always stay in your seat. Never put your head, arms or hands out of the window.
- ★ Talk quietly; do not distract your school bus driver.
- ★ If your school bus crosses railroad tracks, be calm and quiet so that your driver can listen for a train. Always obey your school bus driver's instructions, so that he or she can make safe decisions.
- ★ Never play with the emergency exits. Backpacks, band instruments, or sports equipment may not block the aisle or emergency exits. If there is an emergency, listen to the driver and follow instructions.
- ★ When getting off of the school bus, make sure that all drawstrings and other loose objects are secure so that they don't get caught on the handrail or the door.
- ★ Never cross the street behind the school bus.
- ★ If you leave something on the bus or drop something outside of the bus, never go back for it. The driver may not see you and begin moving the bus.
- ★ Never speak to strangers at the bus stop and never get into the car with a stranger.

## RECYCLING REMINDERS

# KNOW BEFORE YOU THROW.



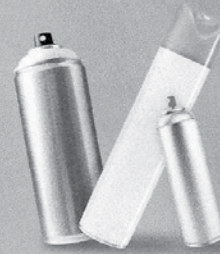
**TOGETHER WE CAN RECYCLE MORE.**



**PLASTICS**  
with numbers 1-7 on bottom



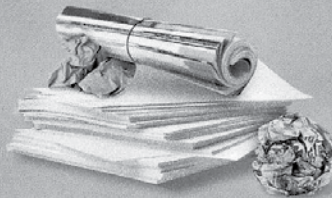
**CARTONS**  
milk, juice and broth cartons



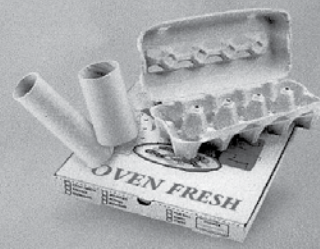
**AEROSOLS**  
empty hairspray, cleaning supplies  
and shaving cream



**CLEAN & EMPTY CANS**  
food, beverage, paint, soup  
and pet food



**PAPER OF ALL TYPES**  
junk mail, copy paper, magazines,  
catalogs and paper bags



**CARDBOARDS**  
any size, any quantity

EVERYBODY'S DOING IT. ARE YOU?



[RECYCLEMOREPA.COM](http://RECYCLEMOREPA.COM)





## Lower Swatara Township

1499 SPRING GARDEN DRIVE  
MIDDLETOWN, PA 17057

Phone: 939-9377 • Fax: 939-5682

WE'RE ON THE WEB!  
VISIT US AT [LOWERSWATARA.ORG](http://LOWERSWATARA.ORG)

PRSRT STD  
US POSTAGE

**PAID**  
HARRISBURG PA  
PERMIT NO. 592



Meals-on-Wheels is a service of the Dauphin County Area Agency of Aging. This program is arranged by the County to make sure that any disabled or senior citizen who is needy, frail, or homebound

without any person to provide for their nutritional needs is eligible to receive a hot meal on a daily basis. In Lower Swatara Township, meals are delivered by caring Township volunteers. At present time, we have sufficient volunteers to deliver meals on a daily basis. However, we have established a list of substitutes for days that our normal delivery person is unavailable. Interested in helping out?

Please phone Tonya Condran at our office (939-9377) or email her at [tcondran@lowerswatara.org](mailto:tcondran@lowerswatara.org).

**SUBSTITUTE MEALS-ON-WHEELS  
VOLUNTEERS NEEDED**



Seated, left to right: Thomas L. Mehaffie III, President & Jon G. Wilt, Vice President. Standing, left to right: Michael J. Davies, Todd F. Truntz, Laddie J. Springer, Assistant Secretary.

**BOARD  
OF COMMISSIONERS**